



HIGH TEMPERATURE LOW TEMPERATURE CONVEYOR DISHMACHINE

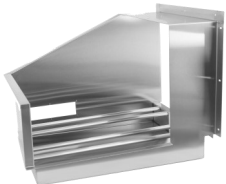
EST-44 EXT

High Temperature-Low Temperature
44" Conveyor Dishmachine



Available as Left or Right.
(Must Specify)

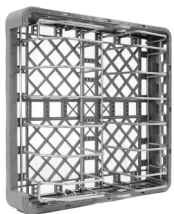
CMA MODEL: EST-44 EXT



Corner Feed Table
Left or Right: must specify
Factory Installed Only



Vent Hoods 4" x 16"
with Damper Control (2 per set)



Sheet Pan Rack



E-Temp
CMA Booster Heater (40° and 70° rise)
Only available in 3 phase with 70° rise
Standard voltage 208-230V three phase
Factory Installed Only

FEATURES

- Automatic water control system.
- 249 racks / 996 covers per hour.
- Economical to operate. Uses only .46 gallons of water per rack of dishes.
- Single control switch activation.
- Power rinse heater system.
- Unique 3-stage washing process provides wash, power rinse and final rinse all in a 44" machine.
- Automatic soil purging system filters wash water and traps plate debris into an external tray. Tray can be easily removed for cleaning.
- All stainless steel construction offers durable performance and years of trouble-free operation.
- Chemical resistant industrial heaters are proven to be more durable than commercial grade heaters.
- Large 25" opening accommodates larger items and utensils.
- Auto start/stop makes operation more energy efficient.
- Easy to remove and replace curtains for cleaning.
- Includes table limit switch and rack saver clutch system that protects the machine, dishracks and table from damage.
- Stainless steel chemical injection chamber.
- Includes 2 racks.

AVAILABLE OPTIONS

- Stainless Steel dishtables
- Drain Water Tempering Kit
- Scrap Trap Single Drain Connection Kit
- 208V-240V / 480V
- Exhaust Fan Control
- 6" Shorter Model Available

Note: Some US States may require Energy Star ratings for Commercial Dishwashers. The specifier or installer is responsible for knowing their local codes, standards, and regulatory requirements. This product was certified and met the requirements of previous Energy Star Version 2.0 for commercial dishwashers as required by some states.



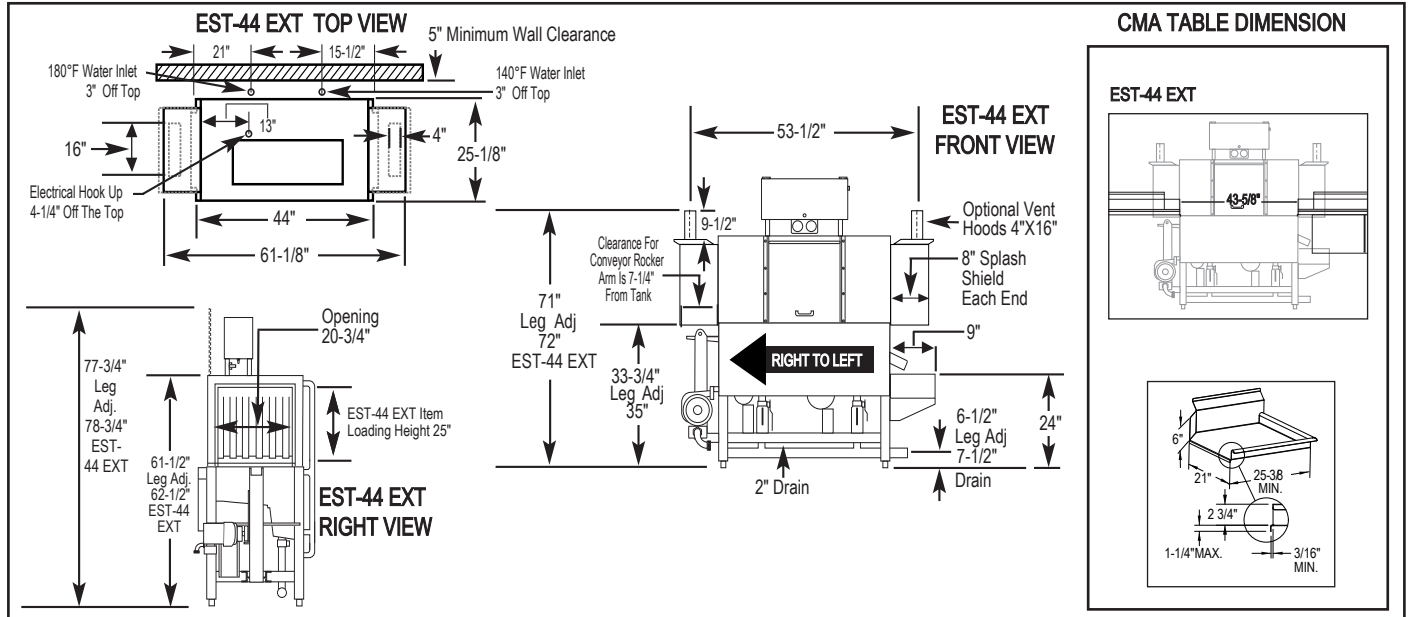


EST-44 EXT

High Temperature
Low Temperature
44" Conveyor Dishwasher

WARNINGS:

- Plumbing connections must be made by a qualified service company who will comply with all available Federal, State, and Local Health, Plumbing and Safety codes.
- CMA recommends utilizing a water softening system to maintain water hardness measurements of 3.5 gpg (grains per gallon) or less. This will assure maximum results and optimum operation of the dishmachine.



Specifications:

MODEL EST-44 EXT H/L	USA	METRIC	USA	METRIC	
OPERATING CAPACITY RACKS PER HOUR (NSF RATED)243	249	249	DIMENSIONS		
CONVEYOR SPEED	6.75 FT./MIN.	(206 CM/MIN.)	DEPTH	25-1/8"	
WASH PUMP MOTORS HP	1	1	WIDTH	44"	
RINSE PUMP MOTOR HP	1/3	1/3	HEIGHT	61-1/2"-62-1/2"	
CONVEYOR MOTOR HP	1/8	1/8	STANDARD TABLE HEIGHT	34"	
WATER INLET - FILL	1/2"	(1.27cm)	MAX LOADING HEIGHT FOR ITEMS	25"	
WATER INLET - FINAL RINSE	1/2"	(1.27cm)	STANDARD DISHRACK		
DRAIN SIZE	2"	(5.1cm)	DIMENSIONS	1 20" x 20" 1 (50.8 X 50.8cm)	
FINAL RINSE PRESSURE	20 ± 5psi	(1.41 kg/cm²)	ELECTRICAL RATING	VOLTS PHASE AMPS	
WASH TANK CAPACITY EST-44 EXT					
PRE-RINSE	4.25 GAL	(16.0 L)	208	1	71
WASH	11.75 GAL	(44.5 L)	240	1	80
TOTAL	16.0 GAL	(60.5 L)	208	3	60.5
WASH PUMP CAPACITY			240	3	69
EACH	52 GPM	(197 LPM)	480	3	27
OPERATING TEMPERATURE EST-44 EXT H			WASH TANK HEATER	15kW @ 208V	
WASH	150°F-160°F	(66°C/71°C)	RINSE TANK HEATER	3kW @ 220V	
PUMPED RINSE	160°F	71°C	SPECIFY DIRECTION OF RACK TRAVEL (RIGHT TO LEFT, LEFT TO RIGHT) WHEN ORDERING		
FINAL RINSE	180°F-195°F	(82°C/90°C)	EST-44 EXT H EXHAUST VENTILATION REQUIREMENTS AT 100% CAPACITY CFM		
OPERATING TEMPERATURE EST-44 EXT L			ENTRANCE END 200 MAX	DISCHARGE END 400 MAX	TOTAL CFM 600 MAX
WASH RECOMMENDED	140°F-150°F	(60°C/68°C)	SHIPPING WEIGHT		
PUMPED RINSE RECOMMENDED	140°F-150°F	(60°C/68°C)	APPROXIMATE	687#	(311kg)
FINAL RINSE RECOMMENDED	140°F-150°F	(60°C/68°C)			
WATER CONSUMPTION					
PER RACK (FINAL RINSE)	0.46 GAL	(1.7 L)			
PER HOUR (FINAL RINSE)	114.56 GPH	(433.6 LPH)			

Summary Specifications: Model EST-44 EXT Conveyor

The Models EST-44 EXT H and EST-44 EXT L Chemical Sanitizing conveyor dishwashers meets ETL sanitation, UL, and CUL construction standards. The EST-44 EXT performs three separate washing functions including a built-in power rinse, all in a 44" space. The EST-44 EXT washes up to 249 racks per hour and uses a minimum .46 gallons of water per rack while achieving sparkling, clean, dry dishes. Constructed entirely of stainless steel.

Call For Available Models (800-854-6417) or See web-Site: www.cmadishmachines.com Advisory: CMA does NOT endorse "Tankless On-Demand" water heaters for use on CMA Dishmachine products. CMA DOES endorse, and highly recommends, the standard "tank" style water heaters, sized properly to handle each particular facility with their water heating requirements.



CMA Dishmachines 12700 Knott Street Garden Grove, CA 92841 • 800-854-6417 • 714-898-8781 • Fax: 714-895-2141 • www.cmadishmachines.com

CMA reserves the right to modify specifications or discontinue models without prior notification.

© 02- 2023 CMA, Inc.

an Ali Group Company



The Spirit of Excellence