

WAREFORCE® DG-E

Project _____
Item _____
Quantity _____
CSI Section 11400 _____
Approval _____
Date _____

Models

WAREFORCE DG-E



Standard Features

- Functions as both a glass-washer and a dishwasher, accommodating wares up to 11-1/2" (292 mm) high
- Push-button start
- Electromechanical controls
- Easily accessible controls
- Built-in chemical pumps and priming switches
- Stainless steel wash pump
- Lower rotary wash arm and fixed upper jets
- Door switch
- Adjustable bullet feet
- Swing-out control box for easy service and access
- Side control panel for easy access to switches
- Dial temperature gauge for constant monitoring of temperature
- Side skirt panels
- Latch-type front (lower) panel
- Delime/manual wash switch

Options

- Water Hammer Arrestor
- Scale Prevention System (SPS)
- Replacement Cartridge for SPS

Accessories

- 36-Compartment Rack
 - 4-1/8" tall (105 mm)
 - 5-5/8" tall (143 mm)
 - 7" tall (178 mm)
- Combination Rack
- Peg Rack
- Machine Stand
 - 6" (152 mm) high
 - 18" (457 mm) high

Specifications

Uses only 1.16 gallons (4.39 liters) of water per cycle

Cleans 40 racks per hour

1,440 glasses per hour

90-second operating cycle

Powerful 1 hp wash pump motor

Built-in chemical pumps and priming switches

Air-gap water inlet

11-1/2" (292 mm) wash chamber clearance

Gravity drain

Built-in waste accumulator

Sustaining heating element maintains final rinse between 120°F (49°C) and 140°F (60°C)

Removable end plugs on lower wash arm and removable upper jets

Durable stainless steel construction

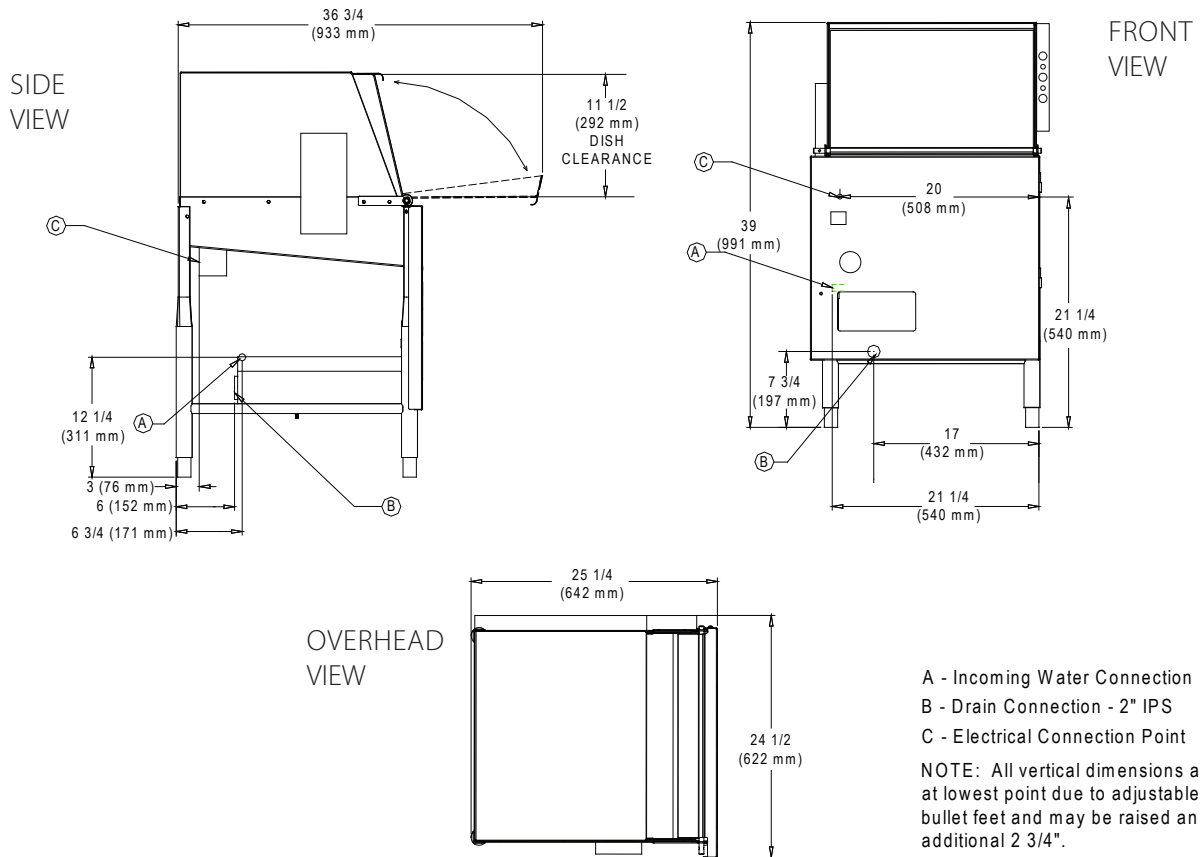


Intertek



WAREFORCE®

WAREFORCE® DG-E



MODEL NO.	MACHINE DIMENSIONS				WALL CLEARANCE	SHIPPING INFORMATION					
	INSIDE CLEARANCE HEIGHT	INSIDE CLEARANCE WIDTH	INSIDE CLEARANCE DEPTH	DOOR OPEN DEPTH		WEIGHT	CLASS	CUBE	HEIGHT	WIDTH	DEPTH
WAREFORCE DG-E	11-1/2" (292 mm)	20-1/4" (514 mm)	20-1/2" (521 mm)	36-3/4" (933 mm)	2" (51 mm)	230 lbs (105 kg)	100	23.32 cu. ft.	50.5" (1283 mm)	28" (712 mm)	28.5" (724 mm)

APPROXIMATE TOTAL AMP LOADS	
115/60/1	16.0

OPERATING CAPACITY	
Racks per Hour	40
Dishes per Hour	1,000
Glasses per Hour	1,440

WASH PUMP	
Wash Pump	1 hp

OPERATING CYCLE	
Wash Cycle (seconds)	40
Rinse Cycle (seconds)	24
Dwell Time (seconds)	18
Total Cycle (seconds)	85

BOOSTER HEATER	
Rinse Tank Booster Heater	2.0 kW

OPERATING TEMPERATURES	
Wash (minimum)	120° F (48.9° C)
Wash (recommended)	140° F (60° C)

WATER REQUIREMENTS	
Gallons per Hour	46.4 gal (176 L)
Flow Rate (GPM)	6.33 gal (24 L)
Flow Pressure (PSI)	15 - 25
Waterline Size (IPS)	1/2"
Drainline Size (OD)	2"
Tank Capacity	1.16 gal (4.39 L)
Wash Pump Capacity (GPM)	61 gal (231 L)

SANITIZERS AVAILABLE	
Sodium Hypochlorite	50 PPM
Iodophor	12 PPM

HOW TO SPECIFY: WAREFORCE DG-E

WAREFORCE®
 Shipping Address: 6209 North U.S. Highway 25E, Gray, KY 40734
 Mailing Address: P.O. Box 1060, Barbourville, KY 40906
 Telephone: 888-800-5672 • Fax: 606-523-1799
 Email: info@jacksonwws.com
 07610-003-68-67 [03/30/17]

We reserve the right to change specifications in this bulletin without incurring any obligation for equipment previously or subsequently sold.